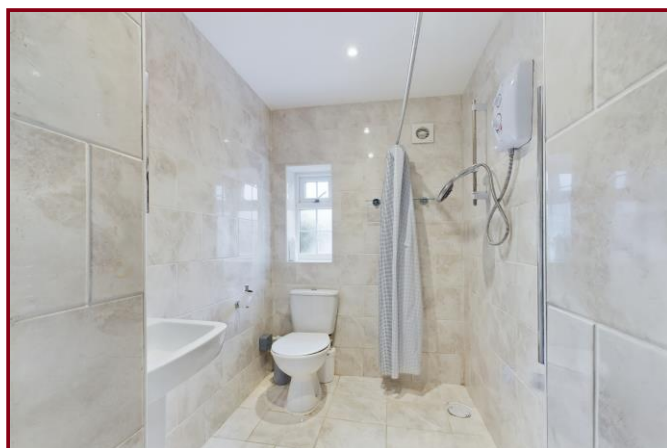




**MAP estate agents**  
Putting your home on the map

**Trevarnon Moor,  
Connor Downs, Hayle**

**£400,000  
Freehold**







**Trevarnon Moor,  
Connor Downs, Hayle**

**£400,000  
Freehold**

## **Property Introduction**

A delightful detached period cottage offering most generous accommodation including four bedrooms situated in a rural position on a private road.

The cottage backs on to open fields yet is on the edge of Connor Downs with its village facilities including doctor, garage and public house and positioned only three miles from Hayle.

The property is double glazed, centrally heated and has parking and garaging.

Offered for sale with no forward chain.

## **Location**

The village of Connor Downs is within a short drive of Hayle and Camborne and with easy access to the A30. Situated nearby is Rosewarne Manor, a well respected restaurant and also the Trevaskis Farm complex with a shop and dining facilities. Schooling is available in Connor Downs and also within two miles at Camborne. There is an Asda supermarket in Hayle and access to the sandy beaches at Gwithian which is popular for surfing and associated outdoor pursuits.

Connor Downs has been bypassed by the A30, the village has a lovely community feel with the hub being the Turnpike Inn Public House which serves food. Less than half a mile outside the village there is a petrol station and a Brewers Fayre which has accommodation and also serves food.

### **ACCOMMODATION COMPRISES**

Entrance door opening to:-

### **ENTRANCE PORCH**

Door to:-

### **WET ROOM**

uPVC obscure double glazed window. Electric shower and wash hand basin with mixer tap over. Heated towel rail and extractor fan.

**LIVING ROOM 26' 9" x 10' 10" (8.15m x 3.30m) maximum measurements**

uPVC double glazed windows to front aspect. Solid fuel stove. Two radiators. Beamed ceiling and stairs to first floor.

**KITCHEN 16' 11" x 9' 3" (5.15m x 2.82m)**

uPVC double glazed window to rear. Range of wall and base cupboards with roll edge work surfaces over incorporating a one and a half bowl single drainer sink with mixer tap over. Space and plumbing for washing machine and space for cooker. Tiled floor, beamed ceiling and radiator.

**BREAKFAST ROOM 10' 1" x 9' 8" (3.07m x 2.94m)**

uPVC double glazed window to side aspect with rural views. Patio doors to garden. Cupboard housing oil fired boiler, beamed ceiling and radiator.

**SUN ROOM 10' 1" x 85' 7" (3.07m x 26.07m)**

uPVC double glazed window. Polycarbonate roof and patio doors to garden.

**FIRST FLOOR LANDING**

Access to loft. Doors off to:-

**BEDROOM ONE 14' 3" x 7' 9" (4.34m x 2.36m) plus recess**

uPVC double glazed window to front. Built-in wardrobe and radiator.

**BEDROOM TWO 12' 9" x 8' 11" (3.88m x 2.72m)**

uPVC double glazed window to front aspect. Built-in wardrobe and radiator.

**BEDROOM THREE 10' 1" x 9' 9" (3.07m x 2.97m)**

A dual aspect room with uPVC double glazed windows to rear and side aspect. Beamed ceiling and radiator.

**BEDROOM FOUR 9' 3" x 8' 7" (2.82m x 2.61m)**

A dual aspect room with uPVC double glazed windows to rear and side aspect. Built-in wardrobe and radiator.

**BATHROOM**

uPVC double glazed window to rear aspect. Panelled bath with electric shower over, pedestal wash hand basin and low level WC. Airing cupboard housing hot water cylinder. Radiator.

**OUTSIDE**

The property is approached over a concrete driveway providing off road parking and leading to the garage. The front garden is mainly laid to lawn with various trees and shrubs including a palm, conifers and rosemary. To the side there is a generous gravelled garden area and to the rear there is a further lawned garden area which backs on to open fields and incorporates a summerhouse.

**GARAGE 16' 5" x 8' 0" (5.00m x 2.44m)**

Metal up and over door. Courtesy door to rear.

**WORKSHOP 15' 8" x 5' 9" (4.77m x 1.75m)**

**SUMMERHOUSE 7' 7" x 7' 7" (2.31m x 2.31m)**

Double doors to front with a window to either side and further window to side. Power connected. Terrace to front.

**SERVICES**

Mains water and mains electricity. Private drainage.

**AGENT'S NOTE**

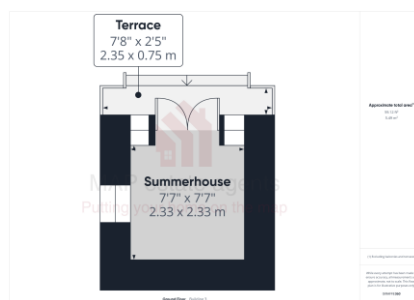
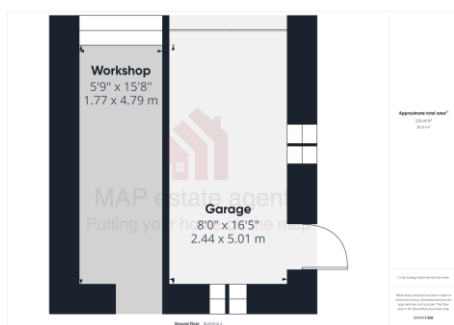
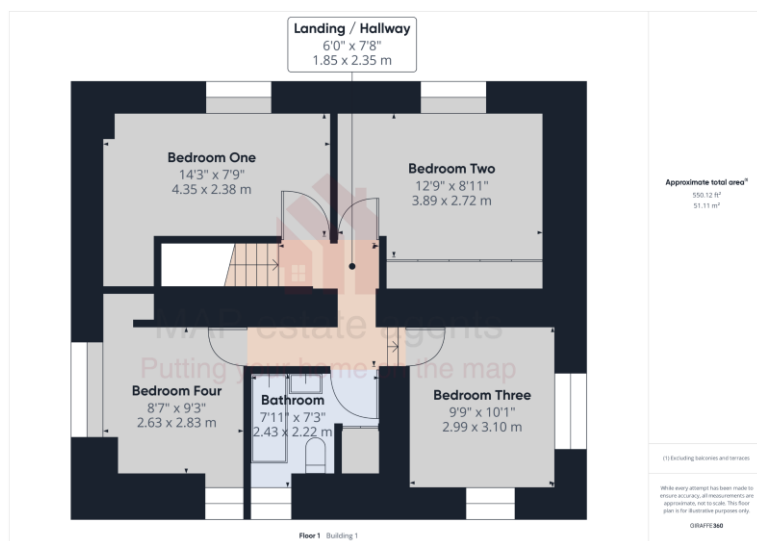
The Council Tax band for the property is band 'D'.





## MAP's top reasons to view this home

- Detached cottage
- Four bedrooms
- Three reception rooms
- Ground floor shower room
- First floor bathroom
- Double glazing
- Central heating
- Garage and parking
- Open countryside views
- No forward chain



01209 243333 (Redruth & Camborne)  
01736 322200 (St Ives & Hayle)  
01326 702400 (Helston & Lizard Peninsula)

01736 322400 (Penzance & surrounds)  
01326 702333 (Falmouth & Penryn)  
01872 672250 (Truro)

[sales@mapestateagents.com](mailto:sales@mapestateagents.com)

Gateway Business Park, Barncoose  
Cornwall TR15 3RQ

[www.mapestateagents.com](http://www.mapestateagents.com)

**IMPORTANT:** Map estate agents for themselves and for the vendors or lessors of this property whose agents they are give notice that the particulars are produced in good faith and are set out as a general guide only and do not constitute any part of a contract and no person in the employment of Map estate agents has any authority to make or give any representation or warranty in relation to this property.